

**HEALTHSKY**

## *Brochure*

**HEALTHSKY**

### **Hangzhou HealthSky Biotechnology Co., Ltd.**

*Add.:* Floor 3, Building 2-1, Liangzhu International Life Science and Technology  
Town, Yuhang District, Zhejiang, China.

*Tel:* +86 571 89774886

*Fax:* +86 571 89774886

*Web:* [www.healthskybio.com](http://www.healthskybio.com)

*E-mail:* [overseas@healthskybio.com](mailto:overseas@healthskybio.com)

**Hangzhou HealthSky Biotechnology Co., Ltd.**

*Care for Health Serve Pathology Make Life Better*





## Table of Contents

### ABOUT HEALTHSKY

Introduction.....	03
HealthSky Members.....	04
Milestones.....	05-06

### CERVICAL CANCER SCREEN

#### Liquid-Based Cytology

SCT Technology.....	09-10
SCT 3600A.....	11
SCT 2400A.....	12
SCTS-48A.....	13
Easy-TLT.....	14
CellTake 4800.....	15-16
p16/Ki-67 Dual Staining Kit.....	17-18

### HISTOLOGY EQUIPMENT

#### Tissue Cassette and Slide Printers

EBMarker-160.....	21
EMarker-11A.....	22

#### Automated Tissue Dehydration and Embedding System

Hatps 96.....	23-24
---------------	-------

#### Rapid Tissue Processor

TDQ-400.....	25
--------------	----

#### Automated Slide Drying and Sorting Machine

Postman 1280.....	26
-------------------	----





## ○ About HealthSky

Founded in 2004, Hangzhou HealthSky Biotechnology Co., Ltd. has been focusing on R&D, manufacturing, sales, and service in the field of Pathological Diagnosis for two decades.

HealthSky is committed to providing unique and advanced solutions for Cervical Cancer Screening and Histological Diagnosis.

Based on the deep understanding of Pathological Diagnosis and depending on the professional R&D team and the state-of-the-art facilities, HealthSky is on the way to making the process of Pathological Diagnosis more standard, automatic, intelligent, and precise.

HealthSky covers an area of 12,000 square meters, including the R&D Center, the standard Manufacturing Plant, and the accredited Pathology Diagnostic Laboratory.

The Company now has more than 300 employees. More than 50 are R&D researchers, and 60% are with Ph.D. or Master's Degree.

Continuous innovation drives HealthSky forward. The Company has obtained 12 Invention Patents, 35 Utility Patents and 4 Software Copyrights.

Pathology, the bridge between science and medicine. HealthSky will keep striving for excellence, working for a healthier and brighter future for humans.

## ○ HealthSky Members



### *Hangzhou HealthSky Biotechnology Co., Ltd.*

Pathology is the central specialty of personalized precision medicine.

HealthSky has been committed to caring for the health, serving Pathology, and making life better with advanced products, services, and solutions since its founded in 2004.



### *Hangzhou HealthSky Pathological Diagnosis Center*

Relying on the deep understanding of Pathological Diagnosis, the Center provides hospitals with integrated solutions for the construction, operation, and sustainable development of the pathology department.



### *Hangzhou Bioin Biotechnology Co., Ltd.*

Bioin specializes in research and development of molecular diagnosis and Immunohistochemical analysis.

**50+**

Patents Obtained

**40 Million+**

LBC Test Performed

**3000+**

Hospitals Served



○ MILESTONES

HealthSky became the authorized distributor of Roche and Thermo Fisher.



**Growth**

**2012**

CellTake 4800 was officially launched and entered the market.



**Breakthrough**

**2015**



**Upgrading**

**2018**

Projects of AI, Telediagnosis Platform and Process Management System are underway.



**New Era**

**2022**

**2004**



**Founded**

HealthSky entered the field of Pathological Diagnosis.

**2013**



**Transformation**

The company began R&D independently, transforming from a trading company to a comprehensive company integrating R&D, manufacturing and sales.

**2016**



**Expand**

HealthSky Liquid-Based Cytology product series gained market share rapidly.

**2020**



**Integration**

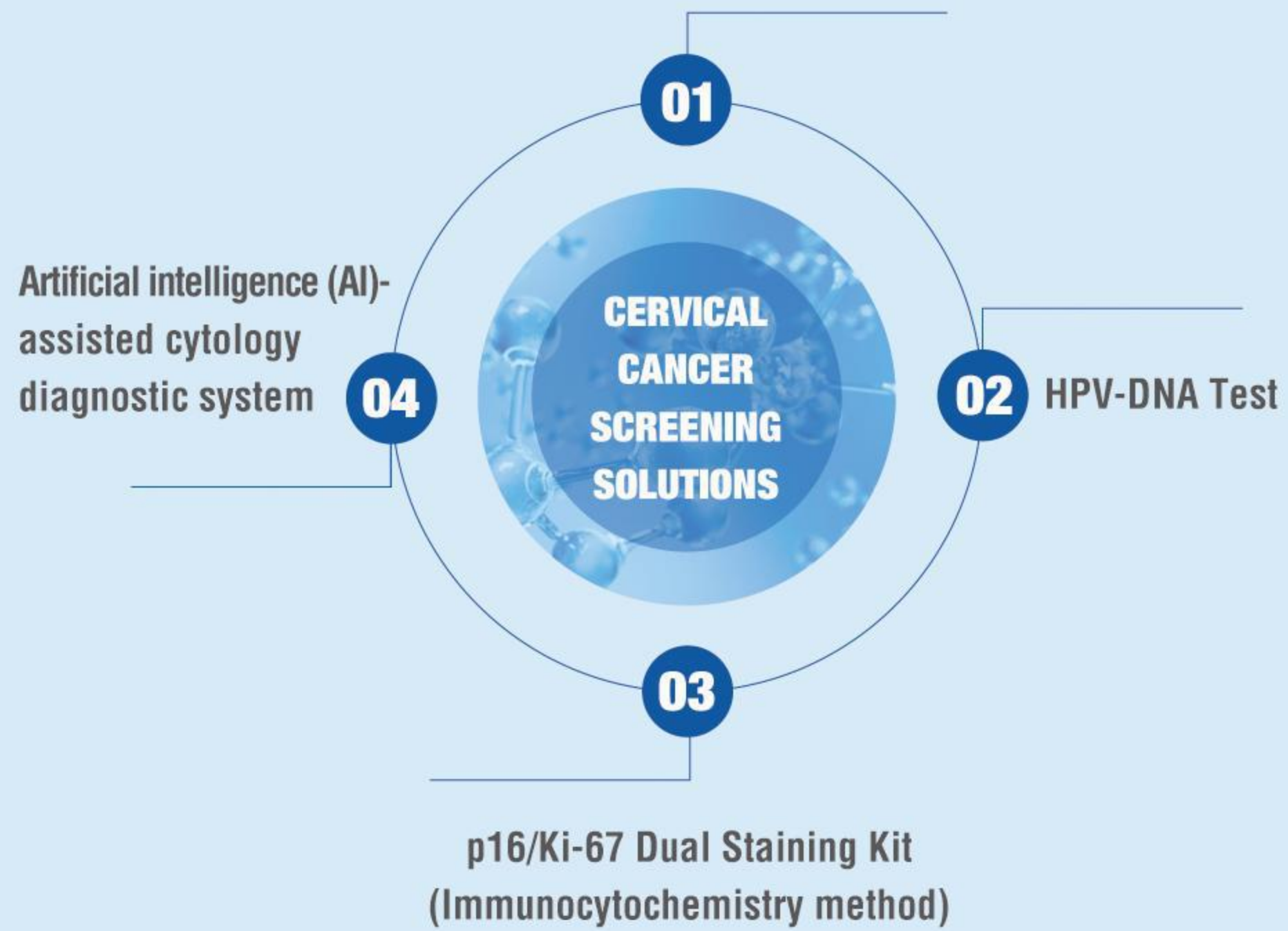
Hangzhou HealthSky Pathological Diagnosis Center was founded.  
One more step towards the Mission: Care for Health, Serve Pathology, Make Life Better.



# 01 Cervical Cancer Screening Solutions

HealthSky offers Liquid-Based Cytology (LBC) Test, p16/Ki-67 Dual Staining Kit, artificial intelligence (AI)-assisted cytology diagnostic system, and HPV DNA Test(upcoming) to support cervical cancer screening.

## Liquid-Based Cytology (LBC) Test



### SCT

A unique and patented cytology slide preparation technology developed by HealthSky.

### 1/10

1 in 10 screened women chooses HealthSky LBC products in China.

### 40 Million+

More than 40 million people have been screened by HealthSky LBC products.

### 10 Million+

Annual production capacity is more than 10 million tests.







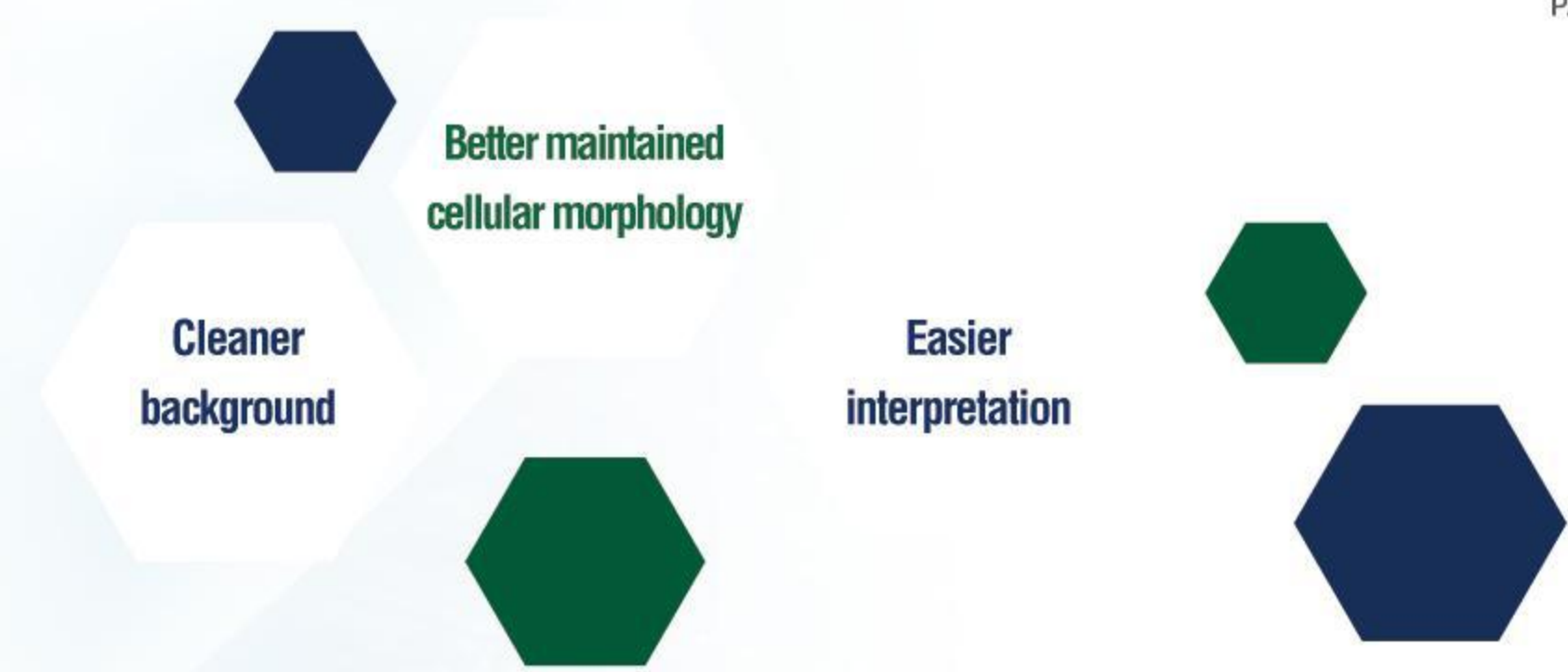
# Sieve Sedimentation Cytologic Technology (SCT)




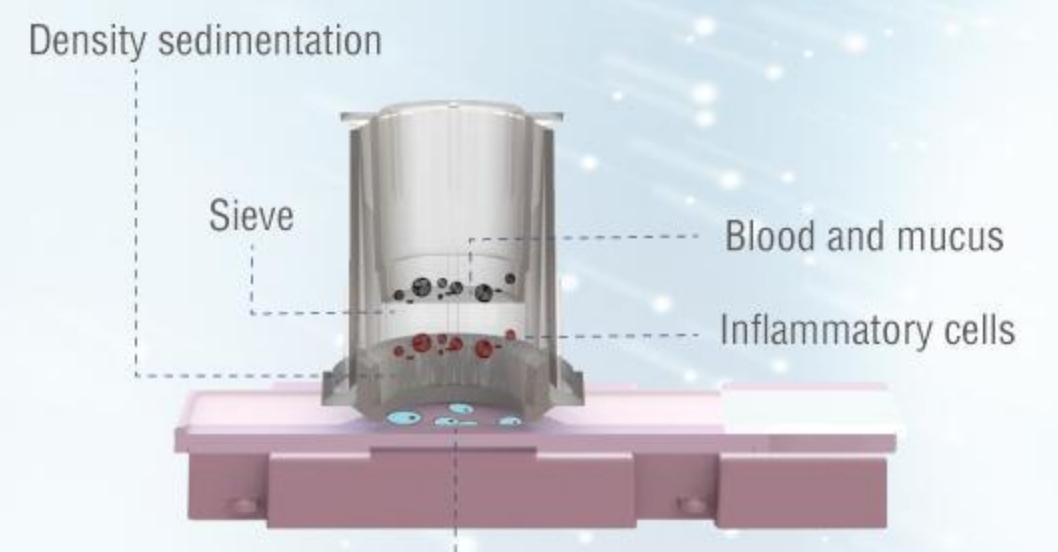


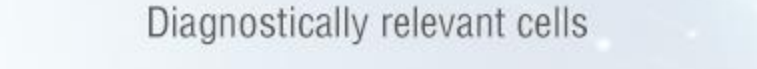



A unique and patented cytology slide preparation technology developed by HealthSky.

SCT separates more obscuring factors such as blood, mucus and inflammatory cells.

SCT improves the quality and clarity of the slides, optimizes accurate screening results for patients.

## Comparison of different principles



Principle	SCT	Sedimentation	Membrane Filtration
Specimen Preserve	 <p>100% of the cells are preserved. More than 8 slides with high repeatability and consistency can be prepared from the same specimen.</p>	 <p>100% of the cells are preserved. More than 8 slides with high repeatability and consistency can be prepared from the same specimen.</p>	 <p>More than 37% of the sampled cells are potentially lost on the broom. One specimen one slide.</p>
Specimen Handling	 <p>Density sedimentation Sieve Blood and mucus Inflammatory cells Diagnostically relevant cells</p>	 <p>Sample transferring      Centrifugation</p> <p>Density gradient centrifugation removes obscuring factors and enriches lesion cells effectively. The process consists of sample transferring and centrifugation and involves several devices.</p>	 <p>Dispersion      Cell collection</p> <p>Mucus and blood are not efficiently eliminated.</p>
Slide processing	 <p>Diagnostically relevant cells</p>		 <p>Cell transfer</p> <p>The cell morphology may be damaged by external forces.</p>
Staining	<p>SCT separates more obscuring factors such as blood, mucus, and inflammatory cells, enriches diagnostically relevant cells efficiently, enabling better visualization of cells. Slide preparing and staining are automatically and individually completed. No manual operation and no cross-contamination.</p>	<p>Natural sedimentation allows better cellular morphology. Automatic and individual staining, no cross-contamination.</p>	 <p>Batch staining, risk of cross-contamination.</p>
Presentation	<p>Clean background, evenly distributed monolayer cells and better cellular morphology.</p>	<p>Clean background, evenly distributed monolayer cells and better cellular morphology.</p>	<p>The cells are unevenly distributed.</p>



**Fully Automated Workstation**

Specimen handling Slide preparing Staining



**All in one**

**Features**

-  Innovative SCT technology.
-  Individual slide preparing and staining, no cross contamination.
-  Humanized operation interface.
-  Bluetooth connection enables remote control.
-  Whole process without human intervention.
-  Intelligent monitoring, multiple protection solutions.
-  Unique cell preservation vial, repeated sampling without lid opening.
-  Efficient and standardized workflow, avoids batch-to-batch variation.

**SCT EXPRESS 3600A**

*Automated Liquid-Based Cytology Workstation*



-  36 samples per batch
-  Whole process in 45 minutes

**New!**



**SCT WORKSTATION 2400A**

*Automated Liquid-Based Cytology Workstation*

-  24 samples per batch
-  Whole process in 60 minutes





## SCT STAINER 4800A

*Cytology Slide Stainer*

SCT STAINER 4800A is an automated Liquid-Based Cytology Slide Stainer that provides efficiency and reliability.

### Features

**SCT** **SCT utilized**

Less obscuring factors and better visualization of cells.

**Reliable**

Consistent staining quality.  
No Cross Contamination.

**Intelligent**

Touch screen.  
Optimized User Interface.  
Bluetooth connection.

**48 Efficient**

1-48 samples per batch.  
Staining mode set on demands.



## Easy—TLT

*Cytology Slide Processor*

Utilizing SCT technology, Easy-TLT separates the cells from the suspension and deposits the cells onto a slide by low-speed centrifugation.

### Features

**SCT** **SCT utilized**

Less obscuring factors and better visualization of cells.

**Convenient**

Slide loading & unloading in one step.

**Fast Processing**

Simple operation.  
High productivity.

**Flexible**

The prepared slides apply to manual staining or SCT STAINER 4800A.



### Specification

**Model:**

SM600, SM100

**Principle:**

SCT

**Capacity:**

1-18 samples

**Processing Time:**

3 minutes per batch

**Applications:**

Cervical specimens



## CellTake 4800

### Liquid-Based Cytology Slide Processing System

CellTake 4800 is a Liquid-Based Cytology Slide Processing System that works on the principle of density gradient sedimentation and is used to process a wide variety of cytology specimens.

The System performs specimen handling, slide preparing, and staining through a standardized workflow.

The prepared slides are characterized by decreased obscuring factors and improved cell distribution.

## Features

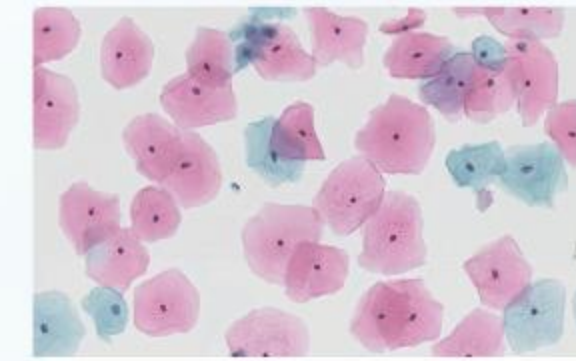
### 48 Efficient throughput

Batch processing up to 48 samples, 336 samples in 8 hours.

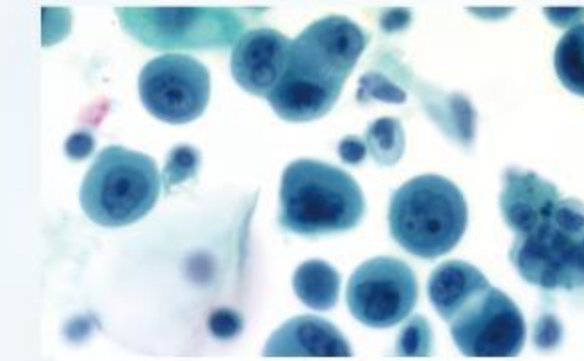
### 🔄 Cross-contamination avoided

Each sample is deposited, stained, and rinsed in a separate chamber.

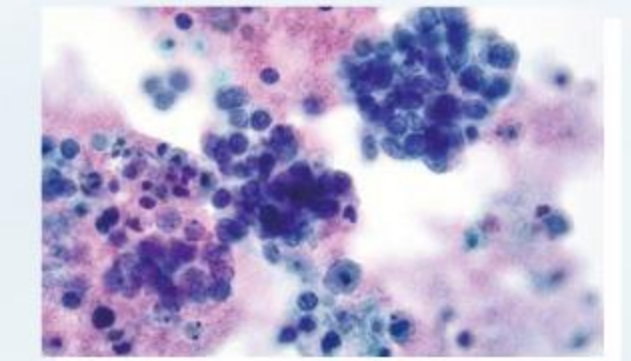
Accessories are disposable for single use.



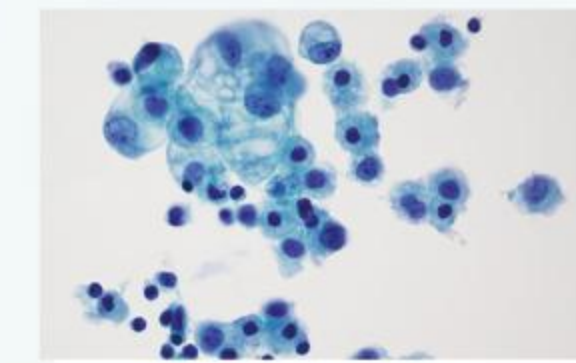
Cervical Specimen



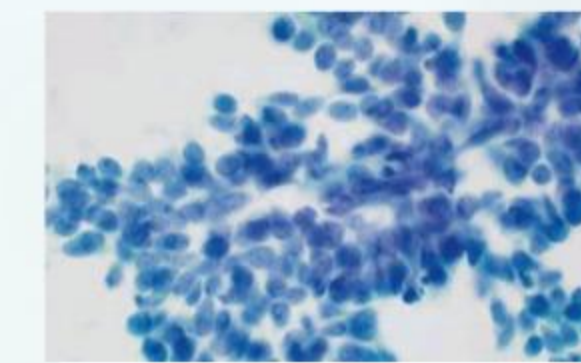
Sputum Specimen



Urine Specimen



Serous Effusion Specimen



FNA Specimen

### ✓ Prepared slide higher quality

Natural sedimentation allows clean background, evenly distributed monolayer cells and better cellular morphology. Specially treated Adhesion Slides increase the adhesion of exfoliative cells.

### 👉 Convenient operation

Touch screen.  
Optimized User Interface.  
Support Bluetooth connection.  
Slide Preparing and Staining modes set up on demand.

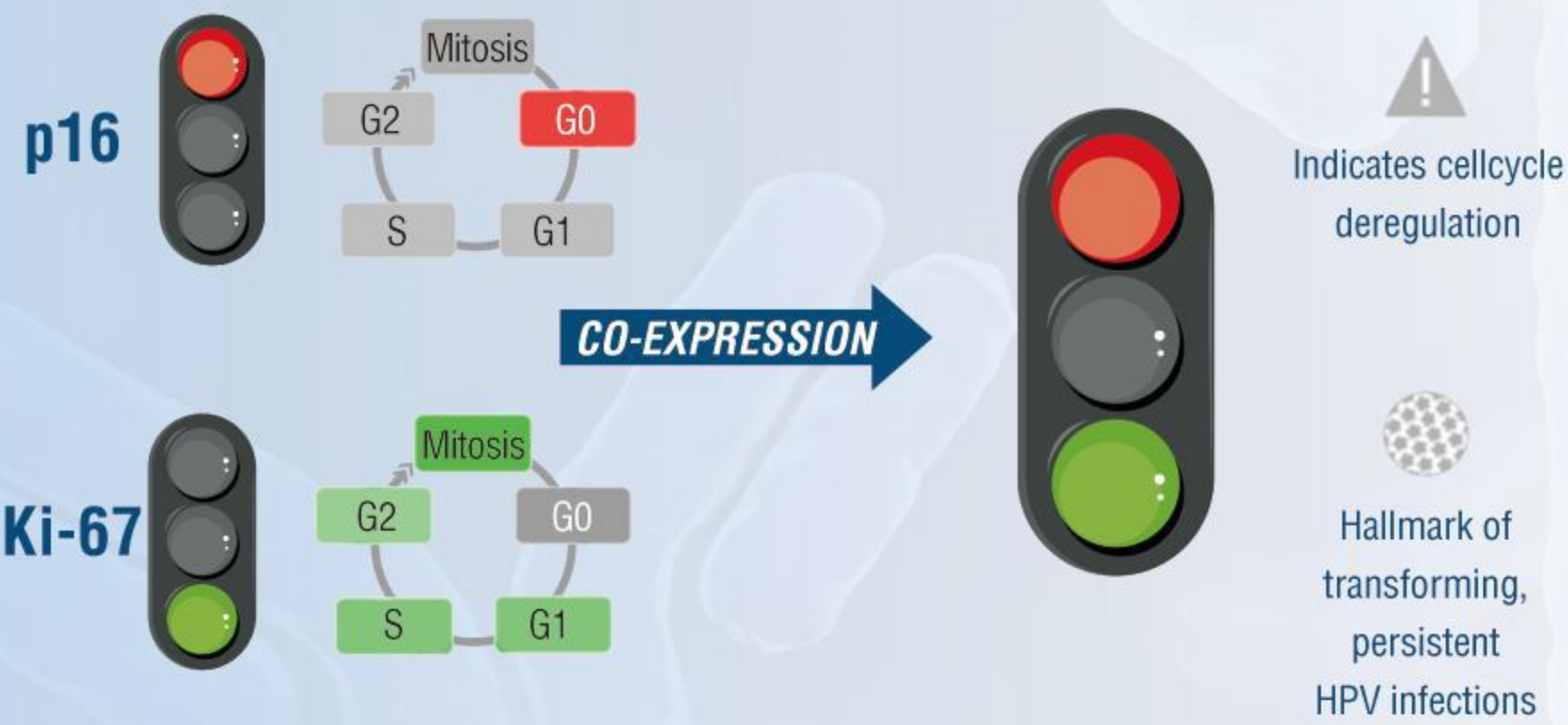




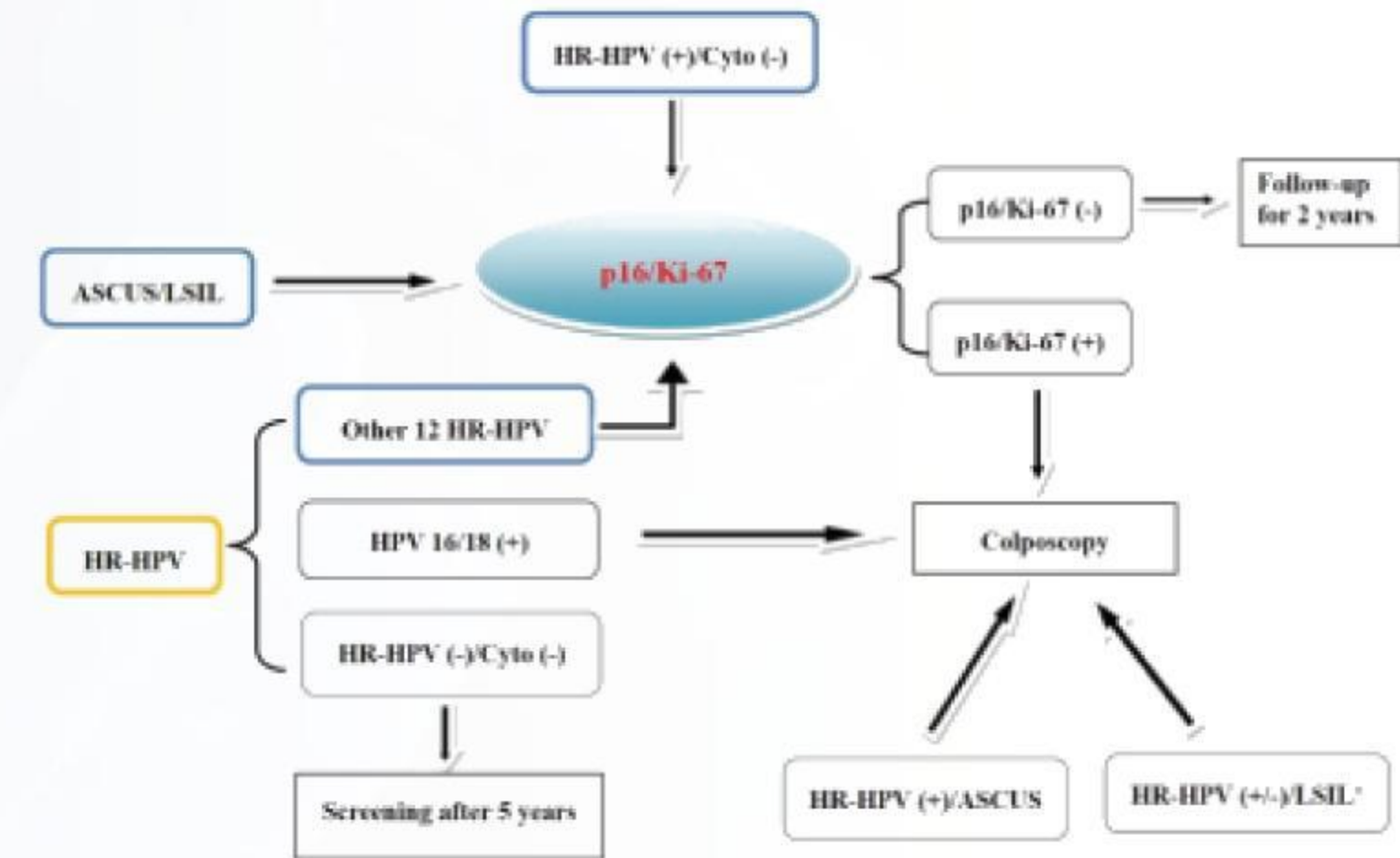
**p16/Ki-67 Dual Staining Kit (Immunocytochemistry method)**



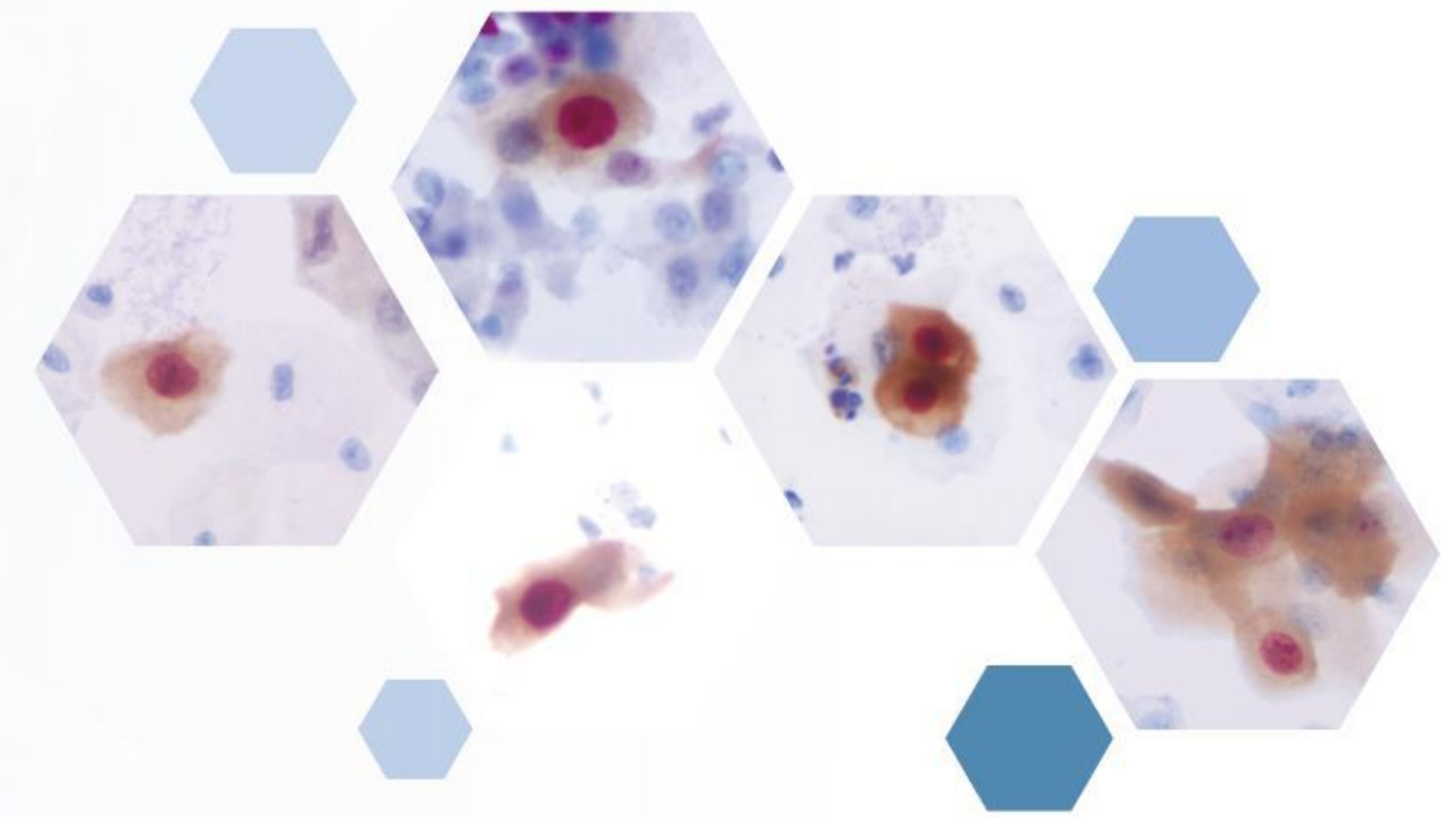
The Bioin p16/Ki-67 Dual Staining Kit is an immunocytochemistry assay for the qualitative detection of p16 and Ki-67 proteins in cervical cytology preparations.



p16 is a tumor suppressor protein and Ki-67 is a cell proliferation marker.  
 p16/Ki-67 co-expressions associated with HPV persistent infection.  
 The positivity of p16/Ki-67 dual-staining strongly indicates CIN2+ or HSIL.



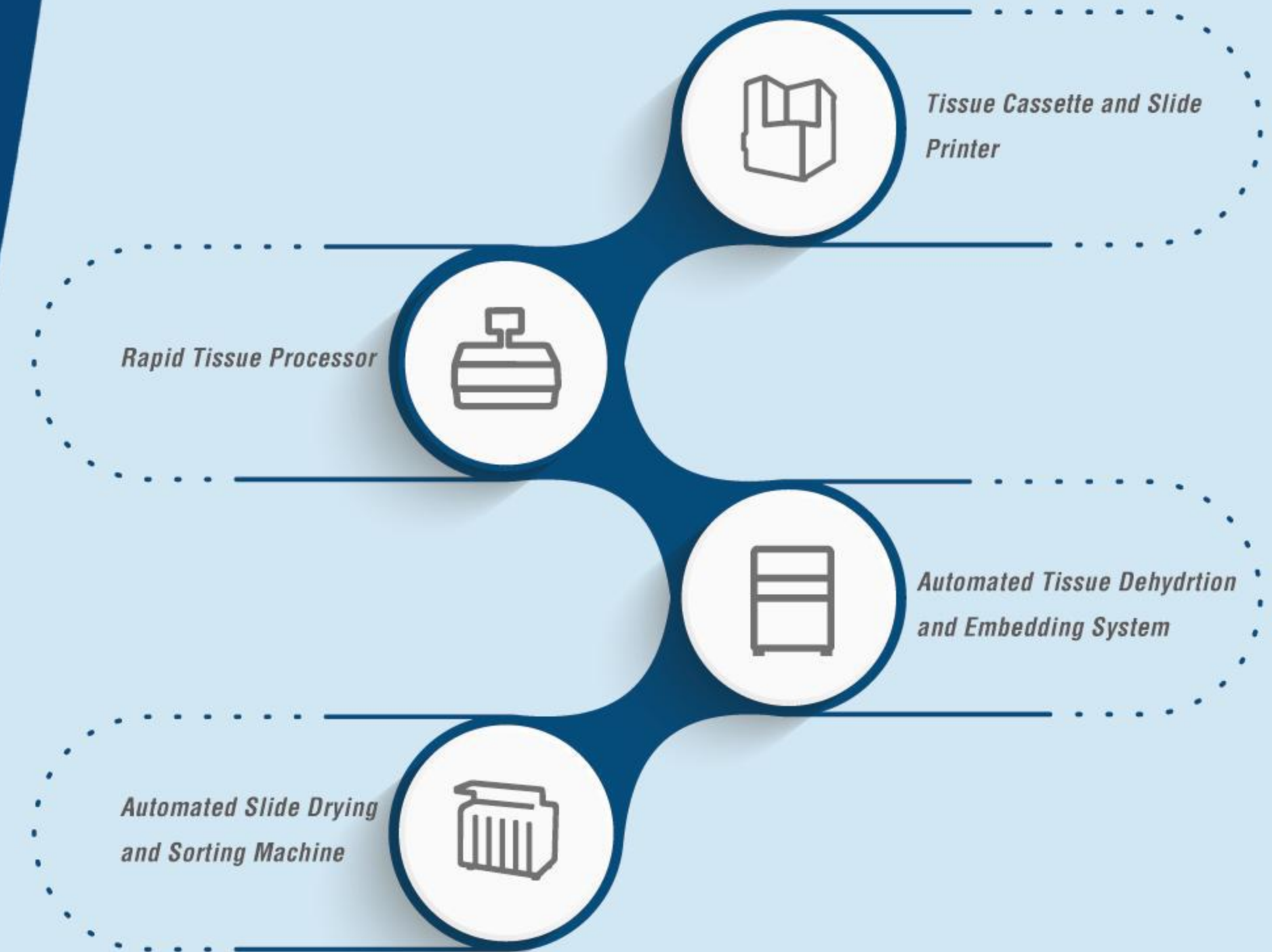
The women diagnosed as ASCUS/LSIL, or positive for HR-HPV and free of cytological abnormalities, or positive for other 12 types of HPV and negative for HPV 16 and 18 are recommended for the triage by p16/Ki-67 dual-staining.





## 02 Histology Equipment

HealthSky has developed a series of products to make the tissue processing more automated and standardized, optimizing precise diagnosis.





**EBMarker-160**

*Tissue Cassette Laser Printer*

EBMarker-160 is a six hopper cassette printer using advanced laser technology to create crisp and permanent markings.

EBMarker-160 delivers efficient and quality batch printing, enables workflow optimization.

**Efficient and Quality Batch Printing**



**Features**

- High-speed**  
Every 3 seconds per cassette.
- Large capacity**  
Up to 600 cassettes can be loaded in the 6 hoppers.  
More than 250 cassettes line up in the output tray.
- Efficient**  
Batch job printing optimizes workflow.
- Personalized**  
User-defined templates.  
Rich printing contents include 1D & 2D barcodes, alphanumeric, graphic, etc.
- Convenient**  
Wireless connection.  
Compatible with LIS / HIS system.
- Durable**  
18 million cassettes can be printed within the life cycle.

**EMarker-11A (S100/C100)**

*Cassette and Slide Laser Printer*

EMarker-11A is an on-demand printer that enables efficient, dependable, and error-free printing of slides or cassettes.

**Minimizing labeling errors  
Improving working efficiency**



**Features**

- High-speed**  
4 second/slide.  
3 second/cassette.
- Efficient**  
Ideal for on-demand printing or batch printing.  
Up to 100 slides/cassettes can be loaded in the hopper.
- Personalized**  
User-defined templates.  
Rich printing contents include 1D & 2D barcodes, alphanumeric, graphic, etc.
- Convenient**  
Built-in scanner for direct inputting.\*Portable output tray for slides collecting and carrying.<sup>2</sup>  
Wireless connection.  
Compatible with LIS / HIS system.

\*1 and 2 apply to EMarker-11A-S100.



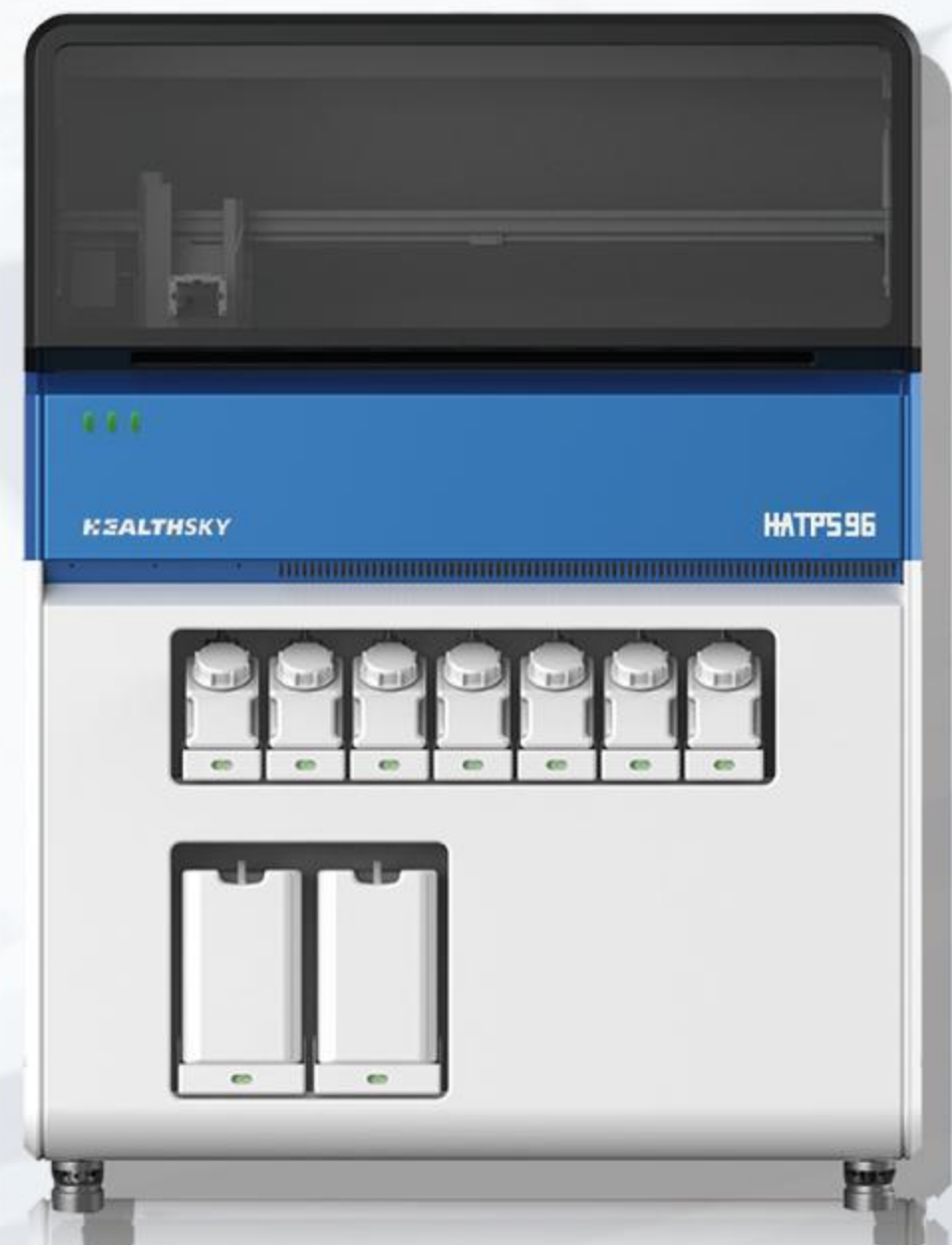
**HATPS 96**

*Automated Tissue Dehydration and Embedding System*

HATPS 96 is a fully automated system that integrates tissue dehydration and embedding

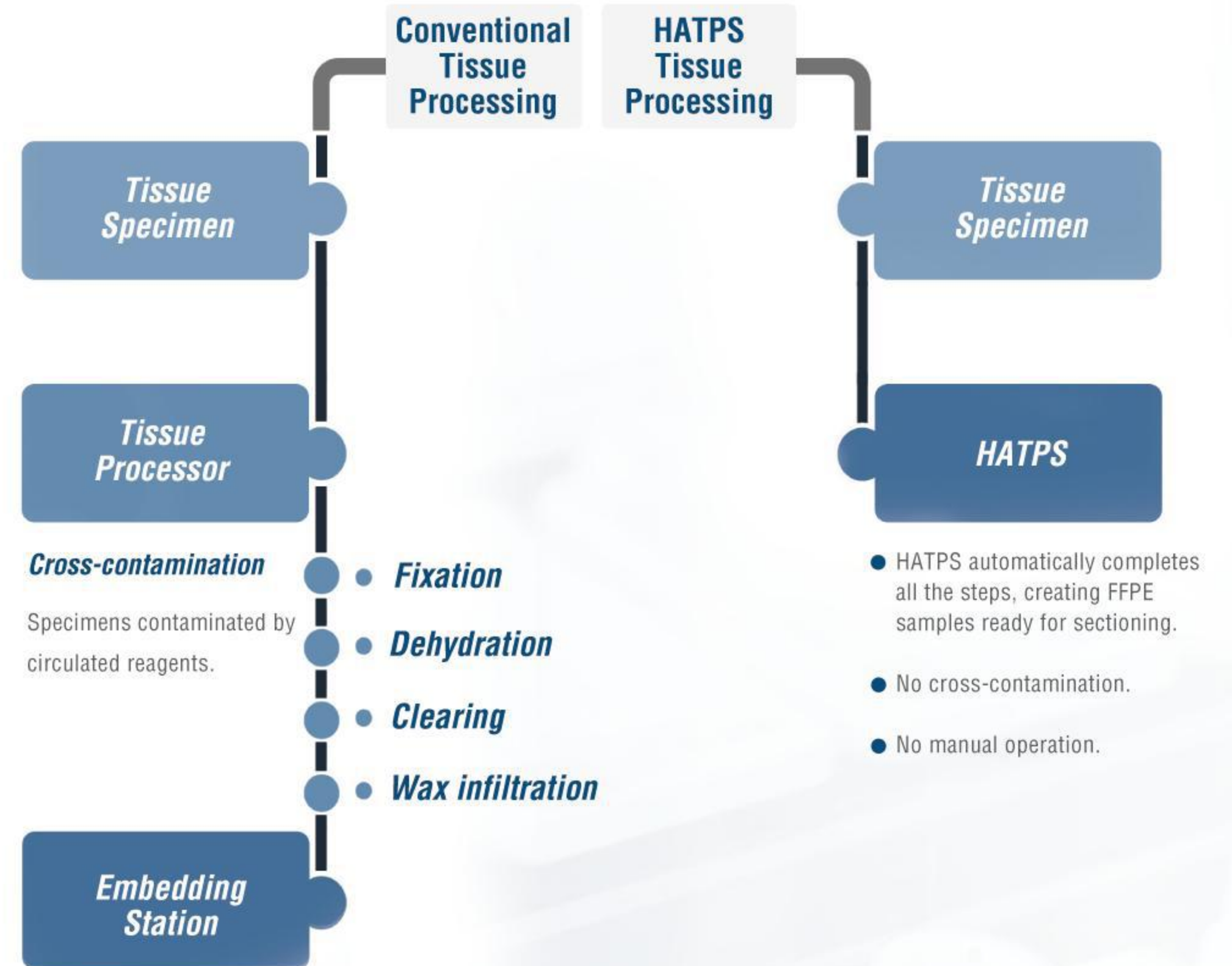
By HATPS 96, every single specimen is automatically and individually processed, consisting of fixation, dehydration, clearing, wax infiltration, and embedding.

**A revolution in tissue processing!**



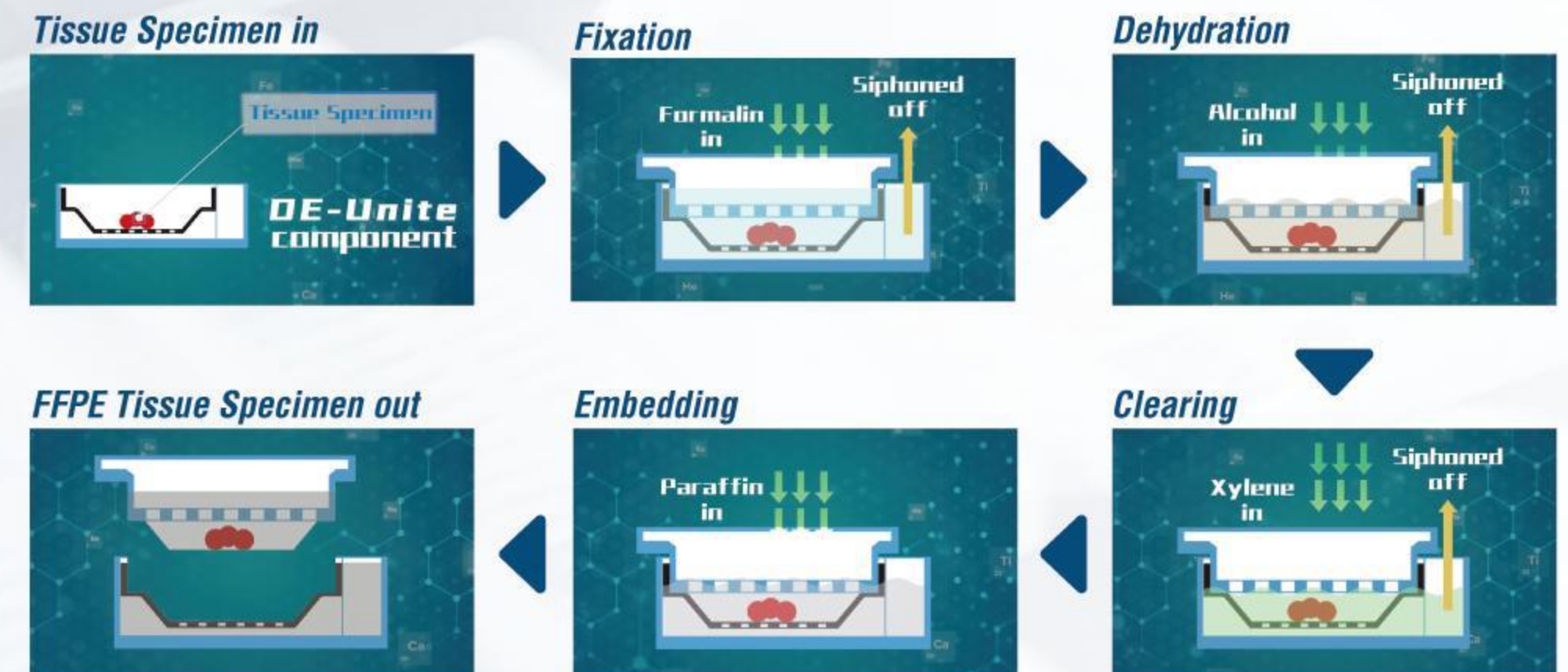
**Features**

- Fully automated**  
Tissue dehydration and embedding processed by the same machine.  
Without manual operation.
- Zero cross-contamination**  
Each specimen is processed individually.
- Flexible**  
3 processing modules run programs independently.  
Support personalized specimen processing.
- Precise control**  
PELTIER module and PID controller adopted.  
The temperature is controlled precisely and the specimens are real-time monitored.
- Wide application**  
The multi-specification DE-Unite components can meet the demands of different tissue types.
- Safety**  
Multiple safety precautions ensure the safety of the specimens.
- 96 High throughput**  
96 specimens per batch.



- HATPS automatically completes all the steps, creating FFPE samples ready for sectioning.
- No cross-contamination.
- No manual operation.

**How does HATPS 96 work?**





**TDQ-400**

*Rapid Tissue Processor*

TDQ-400 is an ultrasonic wave-based tissue processor for rapid tissue dehydration and paraffin infiltration.

TDQ-400 uses ultrasonic energy to accelerate the exchange of liquid inside and outside the specimen, offering efficient, continuous, quality tissue processing.

TDQ-400 saves time on routine overnight process, enables same-day diagnosis.

**Features**

» **Rapid**

Hipenet technology.

High frequency and low amplitude sustained oscillation, accelerate the exchange of liquid inside and outside the specimen without affecting the original structure of the tissue.

» **Steady**

PID Controller offers precise and steady control.

» **High throughput**

Equipped with 4 cylinders, 30 specimens each cylinder maximum.

» **Safety**

Multiple protection systems protect specimen safety.

» **Convenient**

Intuitive UI.

Process parameters are automatically memorized and can be called easily.

Running history recorded for review.

» **Flexible**

Each of the cylinders processes independently, dehydration and paraffin infiltration function can be switched freely.



**POSTMAN 1280**

*Automated Slide Drying and Sorting Machine*

POSTMAN1280 is intended to replace manual slide sorting in hospitals and labs.

The machine obtains slide information by scanning the label barcode or AI identification of the characters on the label, and sorts the slides to a specified sequence according to the user's requirements .

**Application:**

Before IHC (immunohistochemistry): sort the slides by different IHC stains.

After staining and before diagnosis: sort the slides by the patient ID and doctors.

Slide filing: sort the slides by patient ID or slide no.

Other applications can be customized .

**Features**

1279 **High throughput**

Up to 1279 slides can be sorted in one time.

» **Fast**

640 slides sorted in 90 minutes under rapid mode.

» **Flexible**

Slides can be sorted by different items, ID, serial number, doctors etc.

» **Multiple function**

Slides drying and sorting in one machine.

» **Safety**

Multiple protection systems protect slides safety in the process.

